

F.S. NOTES

SPRINKLER SYSTEM

1. SINCE THE TOTAL AREAS OF THIS LICENSE APPLICATION IS NOT EXCEEDING 230 SQUARE METER. SPRINKLER SYSTEM SHALL NOT BE PROVIDED.

FIRE ALARM SYSTEM

2. FIRE ALARM SYSTEM SHALL BE PROVIDED IN ACCORDANCE WITH BS 5839-1:2017 AND THE FSD CIRCULAR LETTER NO. 6/2021.

3. A MANUALLY OPERATED FIRE ALARM SYSTEM SHALL BE PROVIDED FOR LICENSE AREA OF ENTRANCE.

VISUAL FIRE ALARM SYSTEM

4. VISUAL FIRE ALARMS SHALL BE PROVIDED IN ACCORDANCE WITH BS 5839-1:2007, THE FSD CIRCULAR LETTER NO. 2/2012 AND FOLLOW THE DESIGN MANUAL: BARRIER FREE ACCESS 2008 PUBLISHED BY THE BUILDINGS DEPARTMENT.

5. VISUAL FIRE ALARM TO BE PROVIDED AND BE LOCATED AT A PROMINENT LOCATION IN PLACES WHICH ARE INTENDED TO BE ACCESSIBLE TO THE PUBLIC.

HOSE REEL SYSTEM

6. HOSE REEL SYSTEM SHALL BE PROVIDED IN ACCORDANCE WITH THE CODE OF PRACTICE FOR MINIMUM FIRE SERVICE INSTALLATIONS AND EQUIPMENT 2022.

7. HOSE REEL SYSTEM SHALL BE PROVIDED FOR WHOLE BUILDING.

8. THERE ARE SUFFICIENT HOSE REEL TO ENSURE THAT EVERY PART OF THE BUILDING CAN BE REACHED BY A LENGTH OF NOT MORE THAN 30M OF HOSE REEL TUBING.

9. HOSE REEL PUMPS (ON DUTY AND STANDBY) SHALL BE PROVIDED FOR HOSE REEL SYSTEM.

10. A 2000 LITERS HOSE REEL WATER TANK SHALL BE PROVIDED TO SERVE HOSE REEL SYSTEM.

EMERGENCY LIGHTING

12. EMERGENCY LIGHTING SHALL BE PROVIDED IN ACCORDANCE WITH BS 5266-1:2016, BS EN 1838:2013 AND THE FSD CIRCULAR LETTER NO. 4/2021.

13. EMERGENCY LIGHTING SHALL BE PROVIDED IN EVERY COMPARTMENT OF EACH STRUCTURE.

EXIT SIGN AND DIRECTIONAL SIGN

14. SUFFICIENT EXIT SIGN AND DIRECTIONAL SIGN SHALL BE PROVIDED IN ACCORDANCE WITH BS 5839-1:2017 AND THE FSD CIRCULAR LETTER NO. 5/2008.

15. SUFFICIENT EXIT SIGN AND DIRECTIONAL SIGN SHALL BE PROVIDED TO ENSURE THAT ALL EXIT ROUTES AREA CLEARLY INDICATED.

POTABLE EQUIPMENT

16. PORTABLE FIRE EXTINGUISHERS SHALL BE PROVIDED AT E POSITION AS SHOWN ON PLANS.

FIRE DETECTION SYSTEM

17. FIRE DETECTION SYSTEM SHALL BE PROVIDED IN ACCORDANCE WITH BS 5839-1:2017 AND THE FSD CIRCULAR LETTER NO. 6/2021.

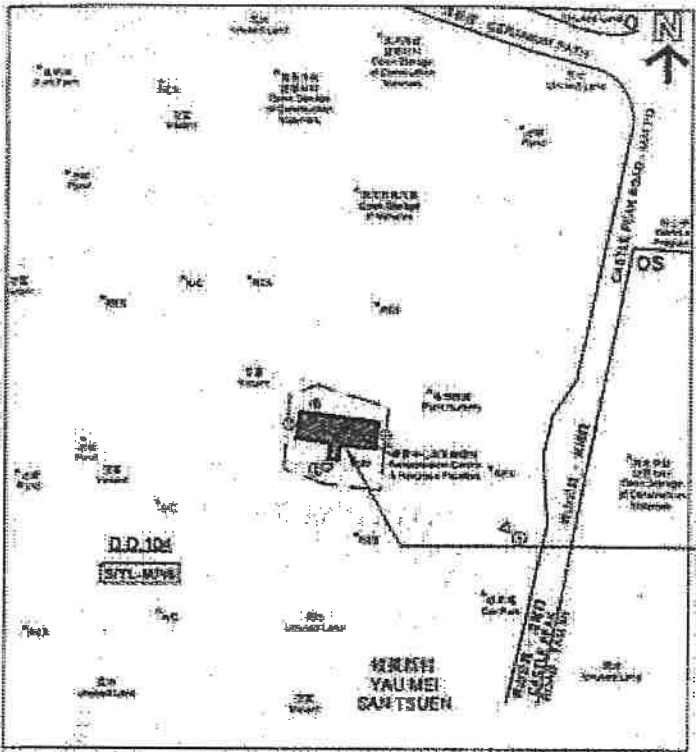
18. SMOKE DETECTOR WITH SOUNDER BASE SHALL BE PROVIDED IN SLEEPING ACCOMMODATION OF LICENSE AREA.

19. THE DETECTOR SHALL BE OF FSD APPROVED TYPE.

20. ON MAIN FIRE ALARM CONTROL PANEL SHALL BE PROVIDED AS INDICATED ON PLANS TO RECEIVE ALL FIRE ALARM SIGNALS.

21. HEAT DETECTOR SHALL BE PROVIDED FOR LAVATORY AND SMOKE DETECTOR SHALL BE PROVIDED FOR LIVING ROOM AND CORRIDOR.

22. ALL FIRE ALARM SIGNALS INCLUDED FIRE DETECTORS, MANUAL FIRE ALARM CALL POINT SHALL BE LINKED TO FSD COMMUNICATION CENTRE VIA. DIRECT LINE PROVIDED BY THE AUTHORIZED SERVICE SERVICE PROVIDER OF THE COMPUTERIZED FIRE ALARM TRANSMISSION SYSTEM.



BLOCK PLAN

元朗米埔丈量約份
第104約地段 第4620號1樓
FIRST FLOOR, LOT 4620
IN D.D. 104, MAI PO,
YUEN LONG

ABBREVIATION

L/L	LOW LEVEL	F.E	FIRE EXTINGUISHER
H/L	HIGH LEVEL	F.S	FIRE SERVICES
FSD	FIRE SERVICES DEPARTMENT	S.S.	STAINLESS STEEL
WSD	WATER SUPPLIES DEPARTMENT	H.R.	HOSE REEL
COP	CODE OF PRACTICE	A.A.V.	AUTOMATIC AIR VENT
T/A	TO ABOVE		
T/B	TO BELOW		
F/A	FROM ABOVE		

COLOUR CODE

FOR PIPE SIZES:

PIPE SIZE	COLOUR CODE
25mm diameter	GREEN
40mm diameter	PURPLE
50mm diameter	YELLOW

LEGEND

	LICENSE AREA		FIRE HOSE REEL		5KG DRY POWDER FIRE EXTINGUISHER
	SMOKE DETECTOR		GATE VALVE		9L WATER TYPE FIRE EXTINGUISHER
	SMOKE DETECTOR WITH SOUNDER BASE		CHECK VALVE		5KG CO2 GAS TYPE FIRE EXTINGUISHER
	HEAT DETECTOR		FLEXIBLE CONNECTOR		EXIT SIGN BOX
	REMOTE INDICATION LAMP		Y-TYPE STRAINER		DIRECTIONAL SIGN BOX
	REMOTE INDICATION LAMP (WEATHERPROOF TYPE)		BALL FLOAT VALVE		FIRE ALARM BELL
	VISUAL FIRE ALARM		STRAINER		MASTER FIRE ALARM BELL
	EMERGENCY LIGHTING WITH BACK UP BATTERY		CHECK METER POSITION		MONITOR MODULE

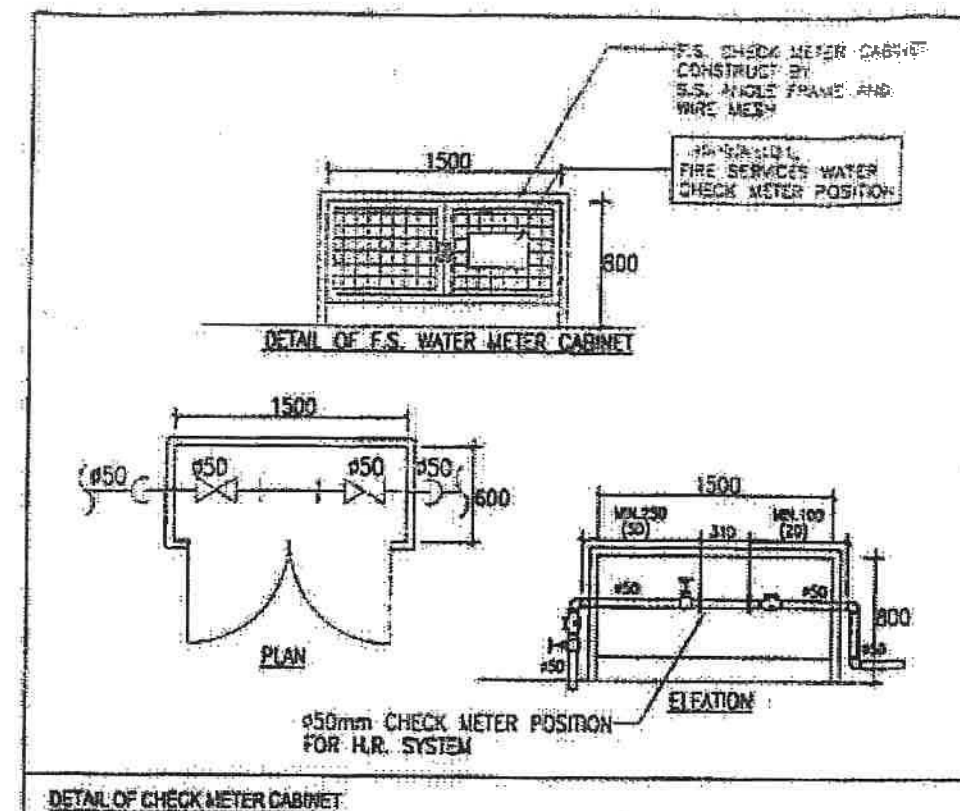
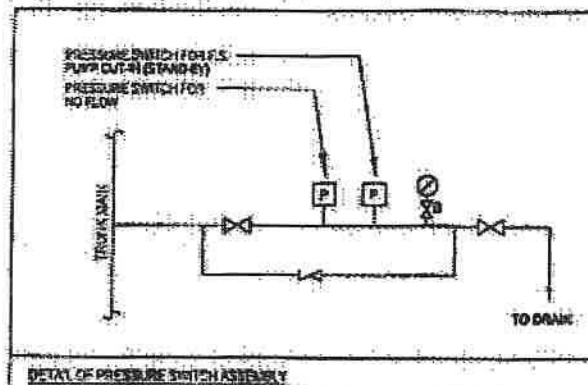
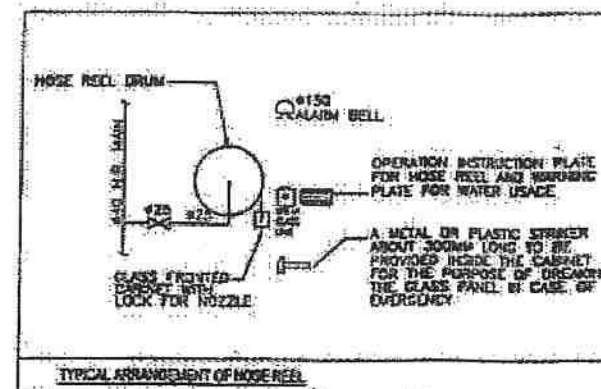
	PRESSURE GAUGE C/W BALL VALVE
	PRESSURE SWITCH
	AUTOMATIC AIR VENT
	LEVEL FLOAT SWITCH
	MANUAL FIRE ALARM CALL POINT
	F.S. CONTROL PANEL
	HOSE REEL PUMP
	CONTROL MODULE

Revision
2024/6/24

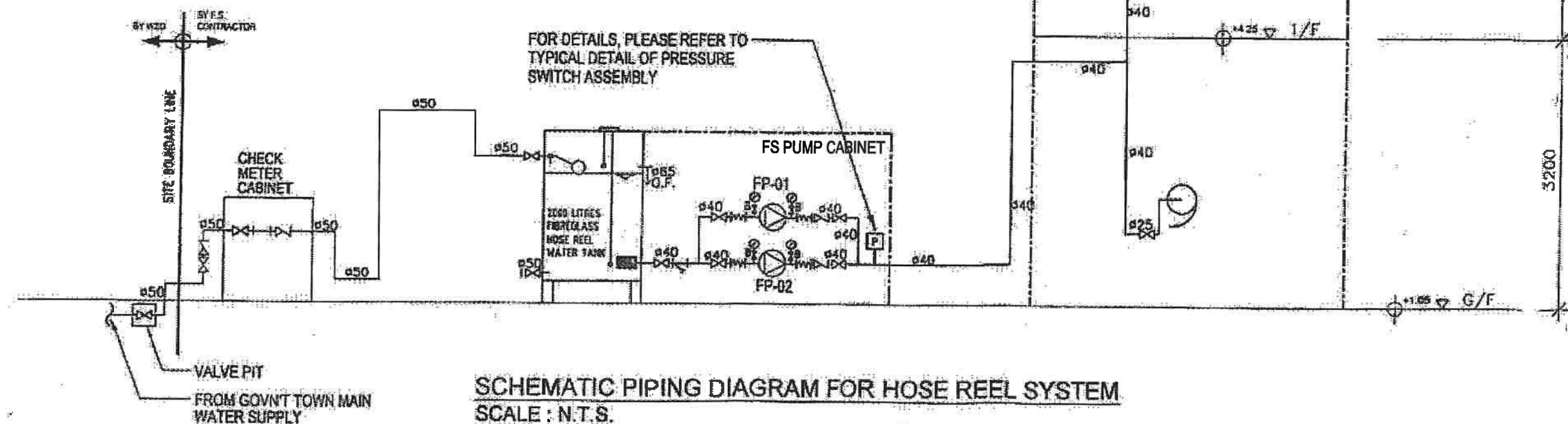
FSI CONTRACTOR: WING KAI ENG. CO.	CLIENT: MISSION ARK LTD.	PROJECT: 元朗米埔丈量約份 第104約地段 第4620號1樓 (關臨時社會福利設施藥物倚賴者治療及康復中心)	TITLE: F.S. NOTES, LEGEND, BLOCK PLAN, ABBREVIATION AND COLOUR CODE FOR PIPE SIZES	R3 REVISED 06/2024 SCALE: NTS JOB NO.: WK230927
				R2 REVISED 12/2023 DRAWN: CAD
				R1 REVISED 09/2023 CHECKED: CK HO DRAWING NO.: FS-01
				NO. REVISIONS DATE: BY DATE:

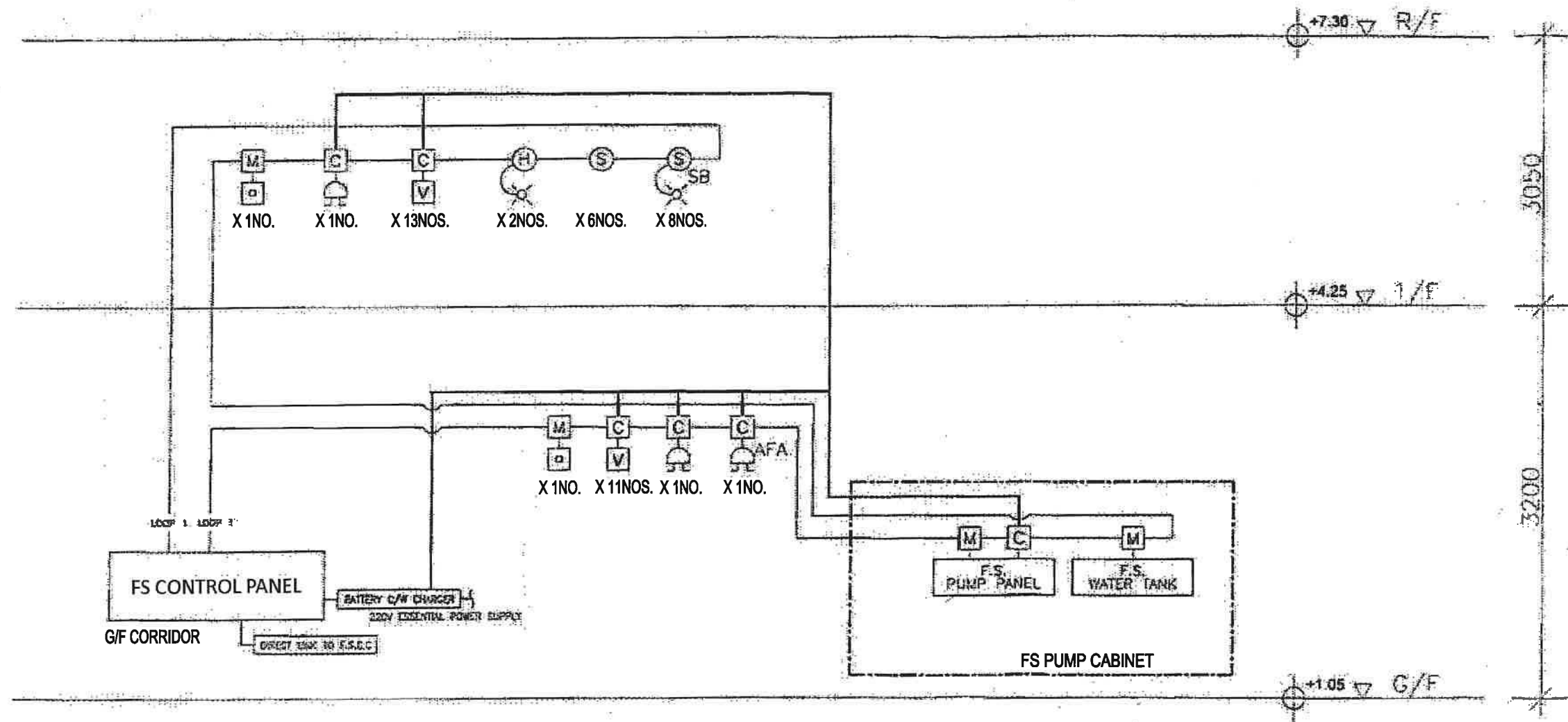
- 1) ACTIVATE FIRE ALARM CALL POINT
拉動火警拉掣
- 2) OPEN CONTROL VALVE BEFORE RUNNING OUT HOSE
先開飲水機，再拉出喉管
- 3) TURN ON WATER AT NOZZLE AND DIRECT JET AT BASE OF FIRE
將喉咀開到最大，對準射向火之基部
(NOT SUITABLE FOR ELECTRICAL FIRES)
不適用於電氣火

DETAIL OF HOSE REEL OPERATION INSTRUCTION PLATE



	TYPE OF PUMP	FLOW RATE (L/min)	PRESSURE (bar)	MOTOR SPEED (RPM)	POWER RATING (kW)
HOSE REEL PUMP FP-01 & FP-02	MULTI-STAGE VERTICAL TYPE	60	5	2900	1.5





SCHEMATIC CONTROL WIRING DIAGRAM FOR FIRE ALARM SYSTEM
SCALE : N.T.S.

FSI CONTRACTOR:



WING KAI ENG. CO.

CLIENT:

MISSION ARK LTD.

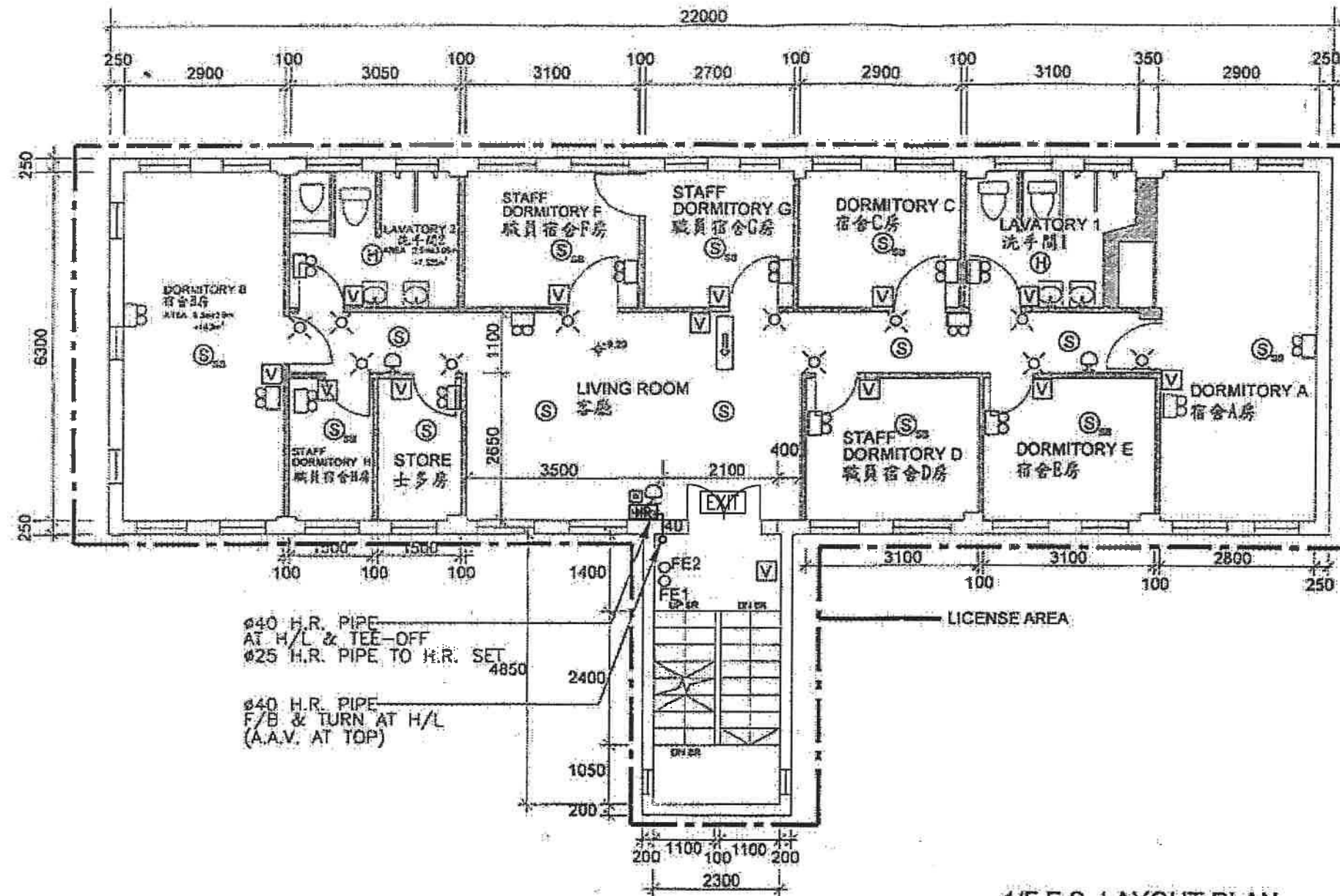
PROJECT:

元朗米埔丈量約份
 第104約地段 第4620號1樓
 (關臨時社會福利設施藥物倚賴者治療及康復中心)

TITLE:

SCHEMATIC CONTROL WIRING DIAGRAM
 FOR FIRE ALARM SYSTEM

R3	REVISED	06/2024	SCALE: NTS	JOB NO.: WK230927
R2	REVISED	12/2023	DRAWN: CAD	
R1	REVISED	09/2023	CHECKED: CK HO	DRAWING NO.: FS-03
NO.	REVISIONS	DATE:	BY	DATE:



FSI CONTRACTOR:



WING KAI ENG. CO.

CLIENT:

MISSION ARK LTD.

PROJECT:

元朗米埔丈量約份
第104約地段 第4620號1樓
(關臨時社會福利設施藥物倚賴者治療及康復中心)

TITLE:

F.S. LAYOUT PLAN FOR FIRST FLOOR

R3	REVISED	06/2024	SCALE: 1:100	JOB NO.: WK230927
R2	REVISED	12/2023	DRAWN: CAD	
R1	REVISED	09/2023	CHECKED: CK HO	DRAWING NO.: FS-05
NO.	REVISIONS	DATE:	BY:	DATE: